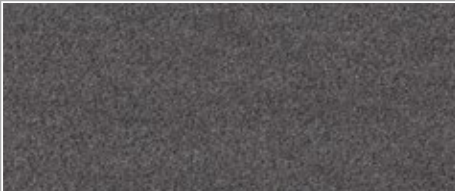
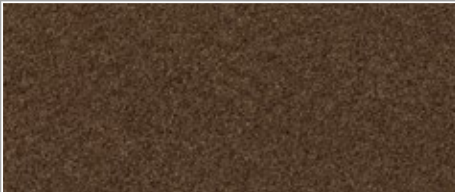


388 Swisslon Uni™



- Plush entrance matting with exceptional scraping and unsurpassed water absorbing qualities (5.5 liters per m<sup>2</sup>) for large indoor entrance areas, including wall-to-wall applications and stairs.
- Coarse yarns provide superb scraping and absorbing of dirt and moisture. Rich single colour tones that stay bright even after prolonged use and hide dirt to maintain their elegant appearance.
- A dense heavyweight vinyl backing ensures longevity.
- Suitable for heavy traffic conditions.
- For placement in recess frames (depth 7 mm) or wall to wall installations in larger entrances at hotels, shopping malls, cinemas, public buildings, department stores, banks, restaurants and on stairs.
- Vacuum/shampooing or use injection/extraction method periodically.



388 Swisslon Uni™

PRODUCT SPECIFICATIONS			
Designation		Dust Control Matting	
Description		Absorbent carpet mat	
Material			
	Top	Densely tufted cut loop pile (73,340 tufts per m²) consisting of coarse 100% polyamide 6.6 yarns.	
	Backing	Black vinyl (DOP free)	
Process		Tufted	
Category		Indoor absorbent - Contract	
Recommended use		Indoor - heavy traffic conditions	
Colours		Black, Charcoal, Red, Taupe, Brown, Grey	
Weight		3.5 kg/m²	
Thickness		8.5 mm	
Standard sizes		130 cm x 20 m 200 cm x 20 m	
Custom sizes		130 cm and 200 cm per linear meter	
Special remarks			
PRODUCT TESTING			
Tests		Norms	Results
Abrasion resistance		ASTM D3884	
Colour fastness to light		AATCC 16E	5
Accelerated wear test by sim floor machine		U.S.	
Accelerated soiling		U.S.	
Anti-slip		DIN51130 BGR181	
Water retention		U.S.	5.5 l/m²
Sanitary epidemiologic test		GN 2.1.6.1338-03 MCL GN 2.1.6.2309-07 OBUV	
Graves tear strength			
Hardness			
Elongation			
FIRE TESTING			
	Surface Flammability	ASTM D2859	
	Russian fire retardancy test		
	Classification of the reaction to fire performance	ISO EN 9239	Cfl-S1
Sustainability		<ul style="list-style-type: none"><li>• Recyclable material</li><li>• REACH compliant ( Registration, Evaluation, Authorization and restrictions of Chemicals)</li><li>• Contributes to cleaner environment by reducing need of cleaning chemicals</li></ul>	